



## 48 Cranleigh Close

, Cheshunt, EN7 6HJ

**£210,000**

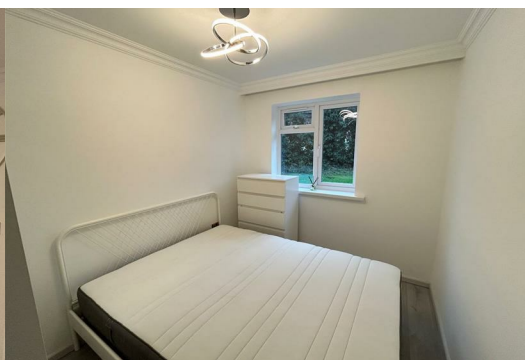


Charming 1-Bedroom Flat in a Quiet Cheshunt Cul-de-Sac

Nestled in a peaceful residential cul-de-sac, this well-presented one-bedroom flat on Cranleigh Close offers an ideal home for first-time buyers, investors, or those looking to downsize. Located in the popular area of Cheshunt, EN7, this property provides a perfect blend of suburban tranquility and excellent connectivity to London and beyond.

Property Features:

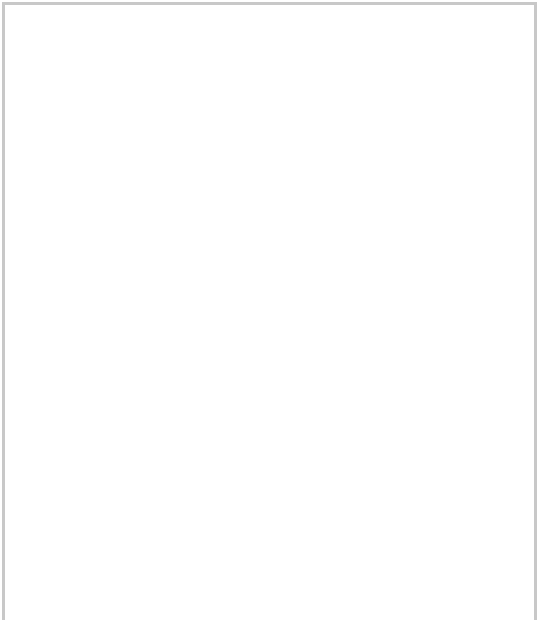
- ? Spacious & Bright Living Area – A well-proportioned lounge with plenty of natural light
- ? Modern Kitchen & Bathroom – Stylish and functional, ready to move in
- ? Generous Bedroom – Comfortable and well-sized for relaxation
- ? Allocated Parking – Convenient off-street parking for residents
- ? Peaceful Cul-de-Sac Location – Low traffic, safe, and quiet



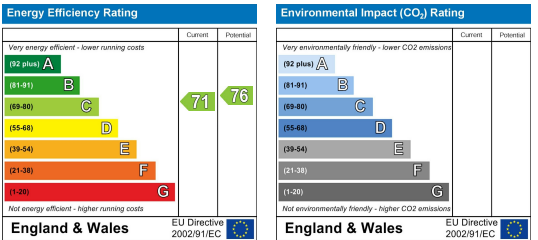
Area Map



Floor Plans



Energy Efficiency Graph



These particulars, whilst believed to be accurate are set out as a general outline only for guidance and do not constitute any part of an offer or contract. Intending purchasers should not rely on them as statements of representation of fact, but must satisfy themselves by inspection or otherwise as to their accuracy. No person in this firms employment has the authority to make or give any representation or warranty in respect of the property.